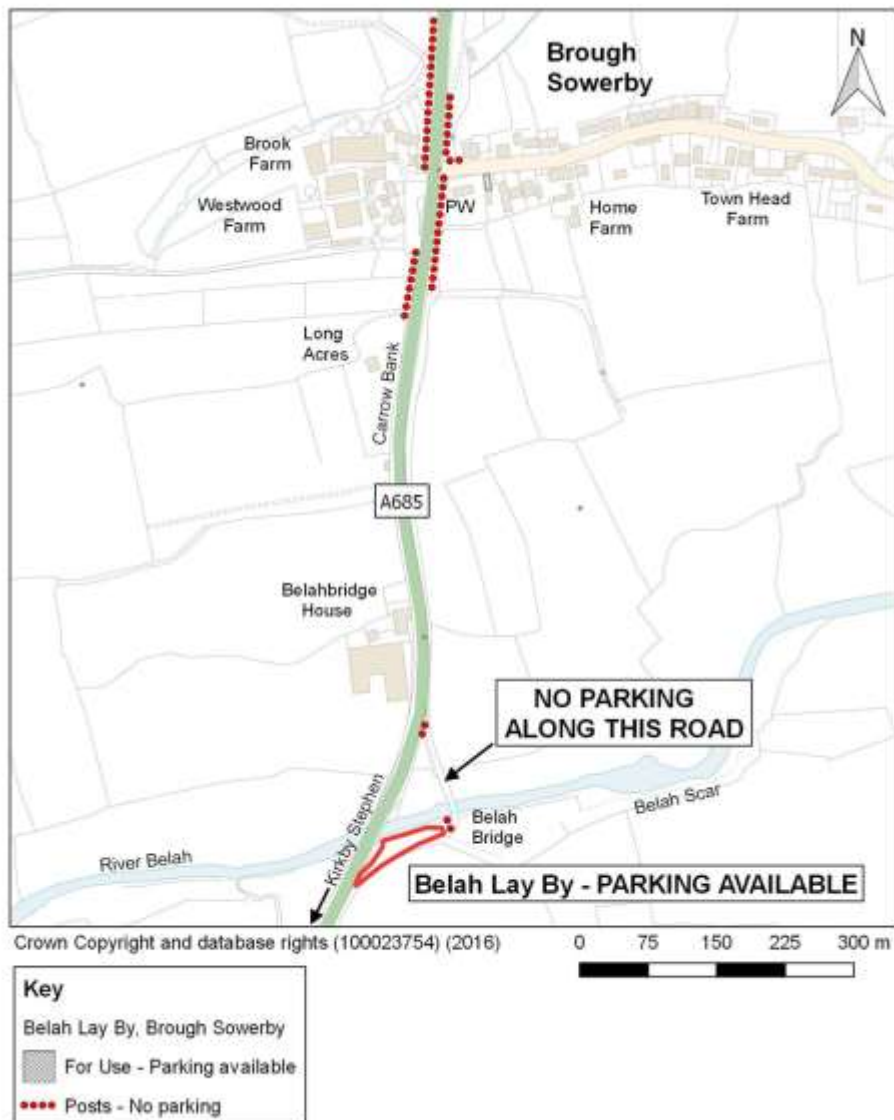
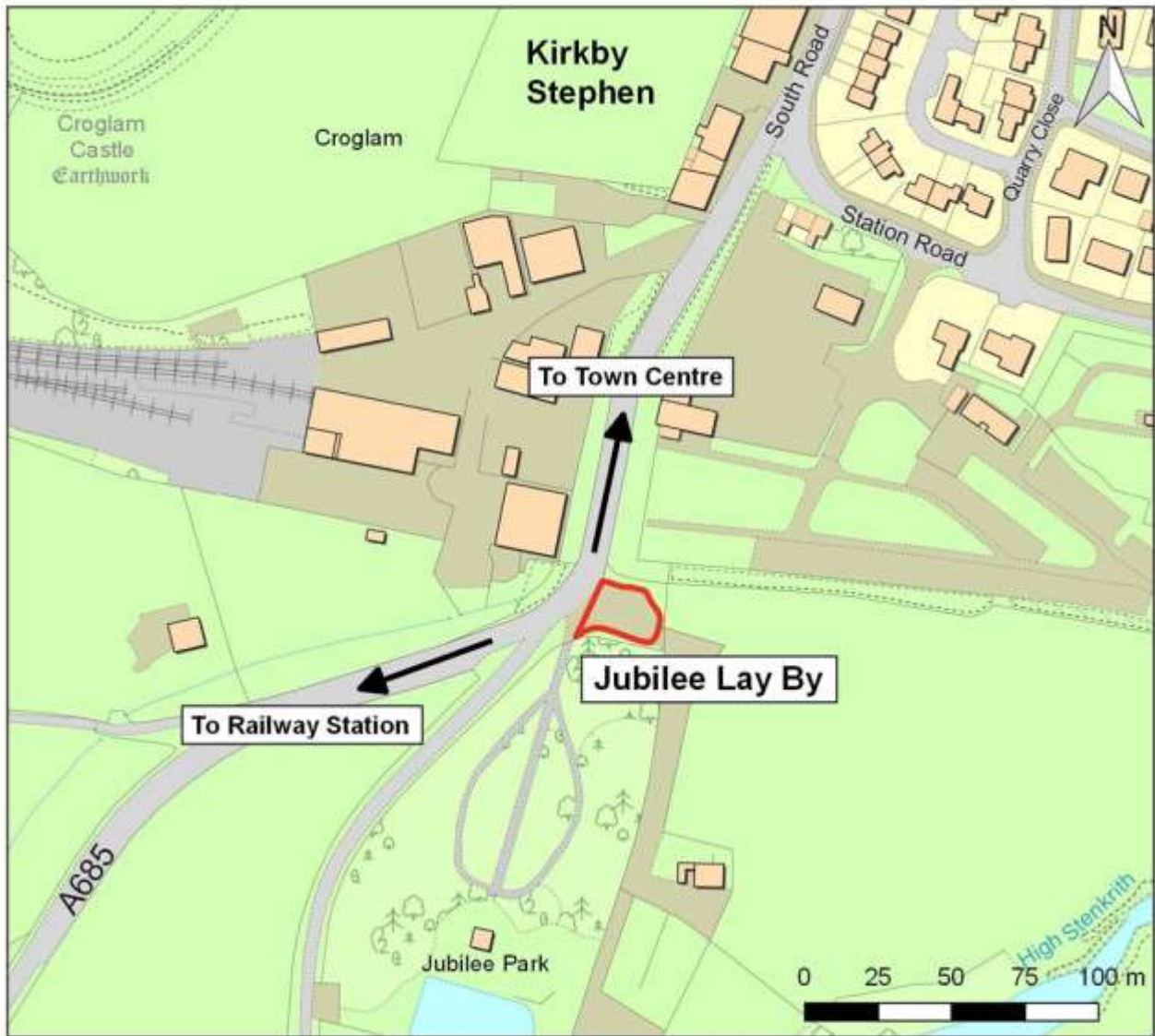


Information on lay-bys with facilities – Kirkby Stephen area

Toilet facilities are provided a few days before the Fair for use by those travelling to the Fair at the following lay-bys:

- Belah layby, Brough Sowerby, Kirkby Stephen on the A685 as shown below on the top map. Please note that there is no parking available beyond the actual layby area, ie parking does not extend over the river bridge or along the road that leads down to the River Belah bridge on the North side of the layby;
- **Please note that for road safety reasons restrictions will be in place along the A685 (Brough to Kirkby Stephen).**
 - Jubilee layby, Kirkby Stephen on the A685 as shown below on page 2 of this document, is suitable for approximately 5 caravans/bowtops. Grazing space for horses is very limited being purely that available on adjacent roadside verges.
 - Bin bags will be provided at these locations, please keep the area clean and tidy, bag all your rubbish and leave by the side of the road for collection.





Crown Copyright and database rights (100023754) (2016)

Key

Jubilee Lay By, Kirkby Stephen

For Use - Parking available