

## Information on temporary stopping places - Melmerby

### Map on Page 2 of this Document

Those travelling to Appleby Fair are welcome to stop at Melmerby Village Green on their way to and from the Fair, however there are limits set as regards the areas and dates of use which must be adhered to.

Separate areas have been designated for use by caravans, horse-drawn bow tops and for horse grazing and these are illustrated on the map below on page 2. Please do not park large horse boxes on the village green as this takes up valuable space provided for caravans.

In response to problems encountered in the last few years whereby horses have been tethered in areas of the hay meadow where grazing is prohibited, changes have been introduced. The landowner and the Melmerby Green Conservation Group have kindly identified available grazing areas and these are shown on the map on page 2 of this document. Some areas of the hay meadow that are strictly out of bounds will be marked by a temporary fence so that there can be no confusion.

**Please respect the boundaries and do not jeopardise future use of the village green as a temporary stopping place by disregarding these boundaries.**

The available grazing is required for bowtop horses, Melmerby is an essential staging post for bowtop horses travelling between Alston and the Fair. **Please be considerate to their needs and do not bring horse boxes full of horses.**

Please note that this land is privately owned and you do not have a legal right to be on this land.

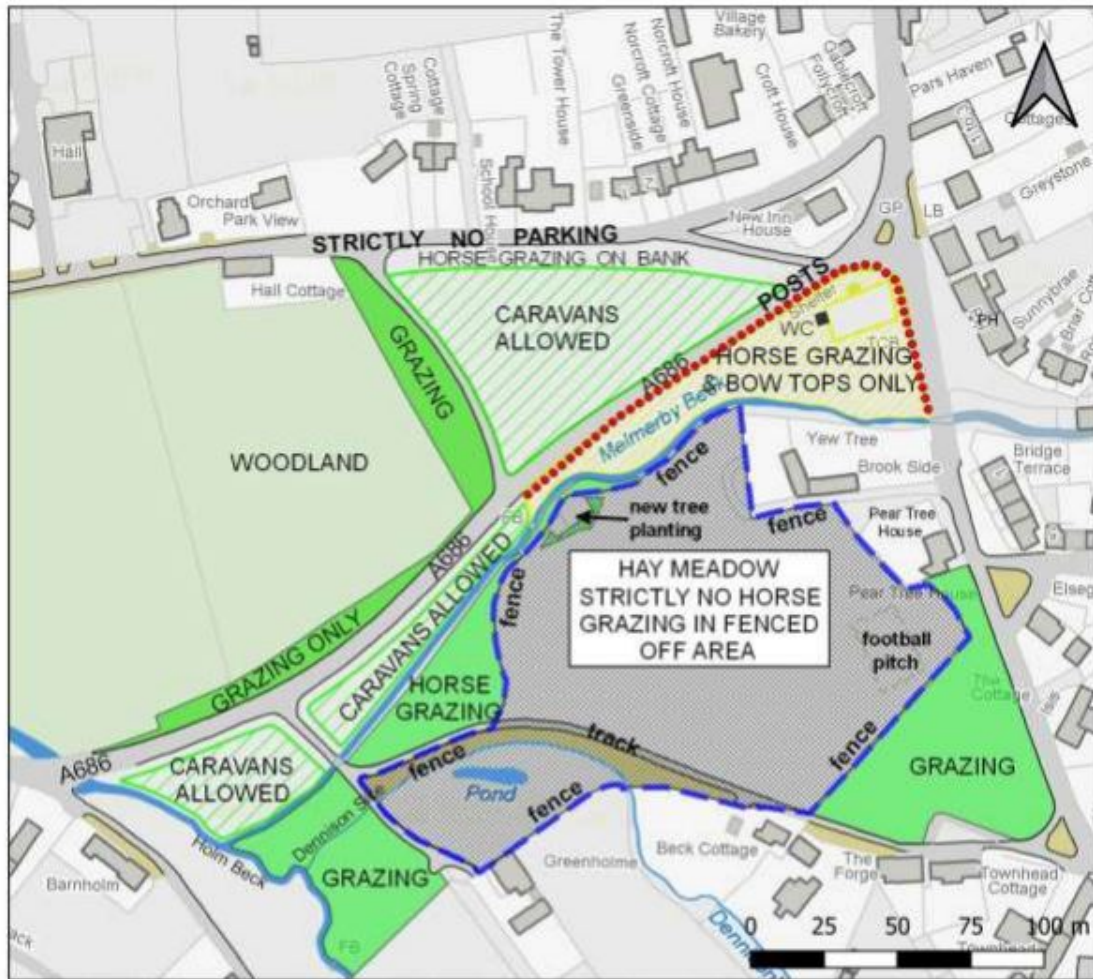
The Police and landowner can evict you at any time.

Occupancy of the village green is allowed as follows:

- From 9am on Monday 9 August 2021 to Thursday 12 August when the green will close and all occupants are expected to move on to the Fair.
- The village green will reopen from 9am Monday 16 August until noon on Thursday 19 August 2021.
- Camping will not be permitted at any other times.
- Toilets, a water supply and rubbish collection arrangements will be provided.

Please note that horse boxes and other vehicles, including caravans cannot park along the roadside which runs along the top of the village green. A Traffic Regulation Order prevents any parking here and anyone parking in contravention of the Order will be issued with a fixed penalty notice.

Horses must not be allowed onto the restricted areas of the hay meadow.



Crown Copyright and database rights (100023754) (2019) EB/AD/23.4.19

